

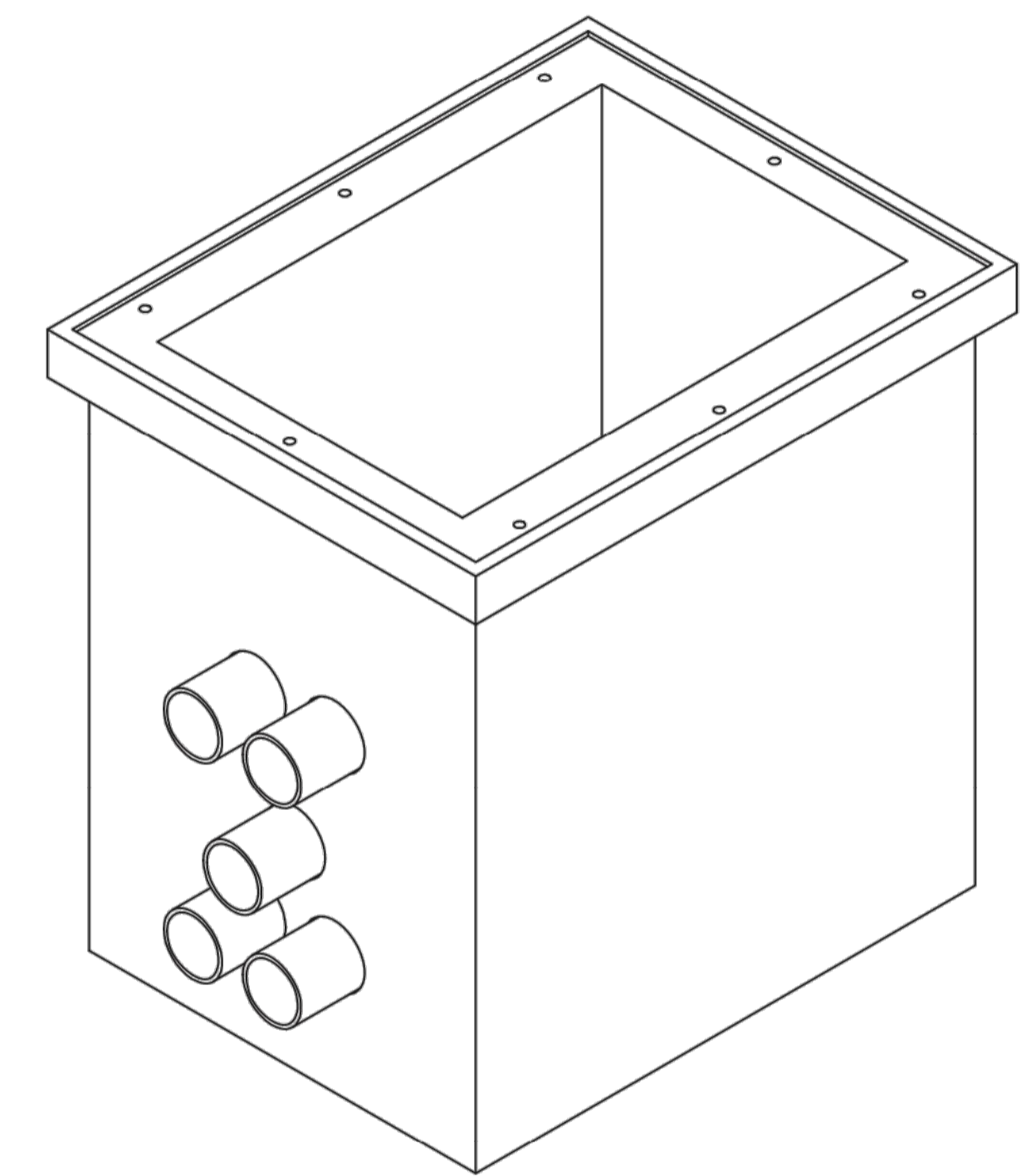
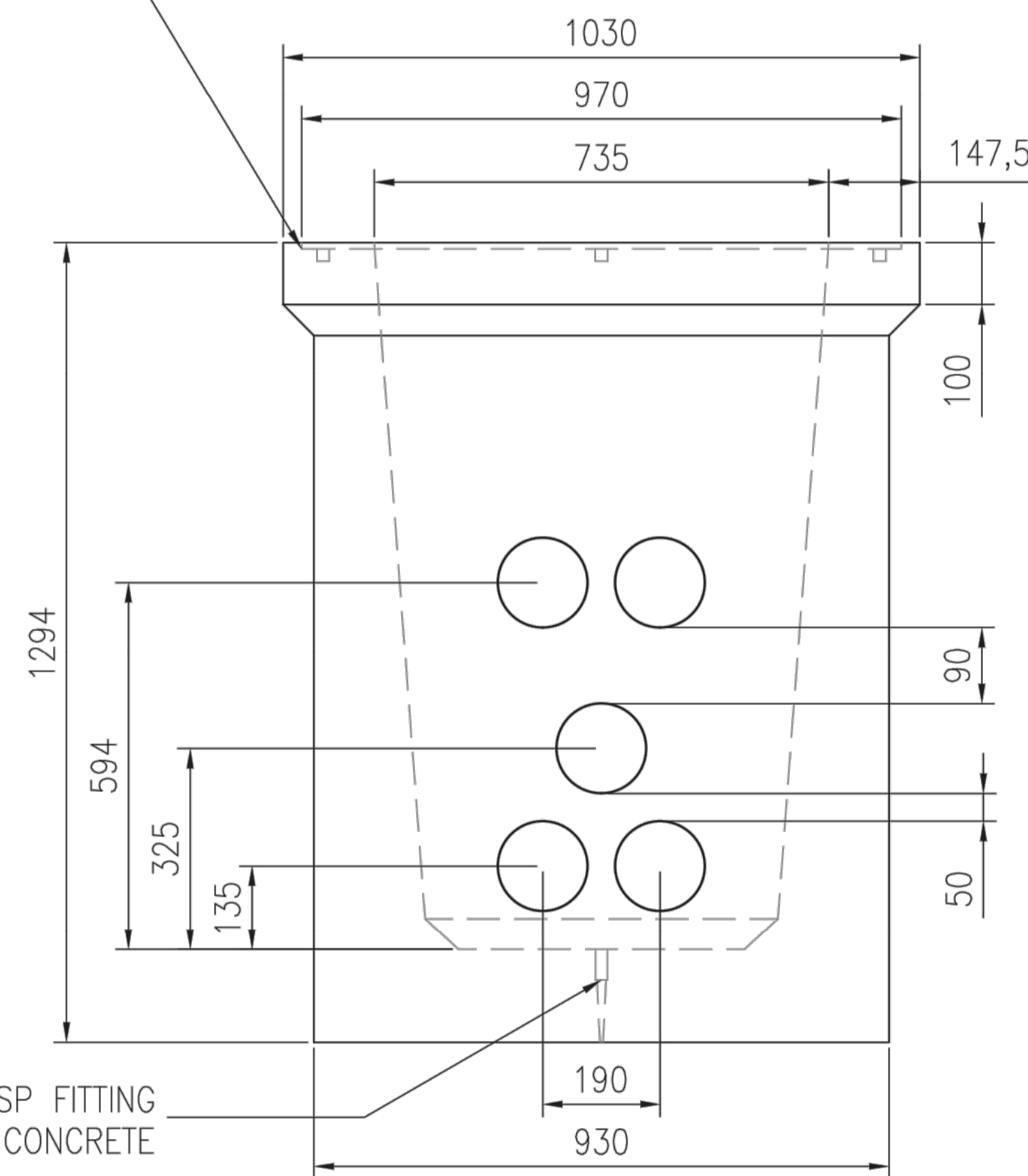
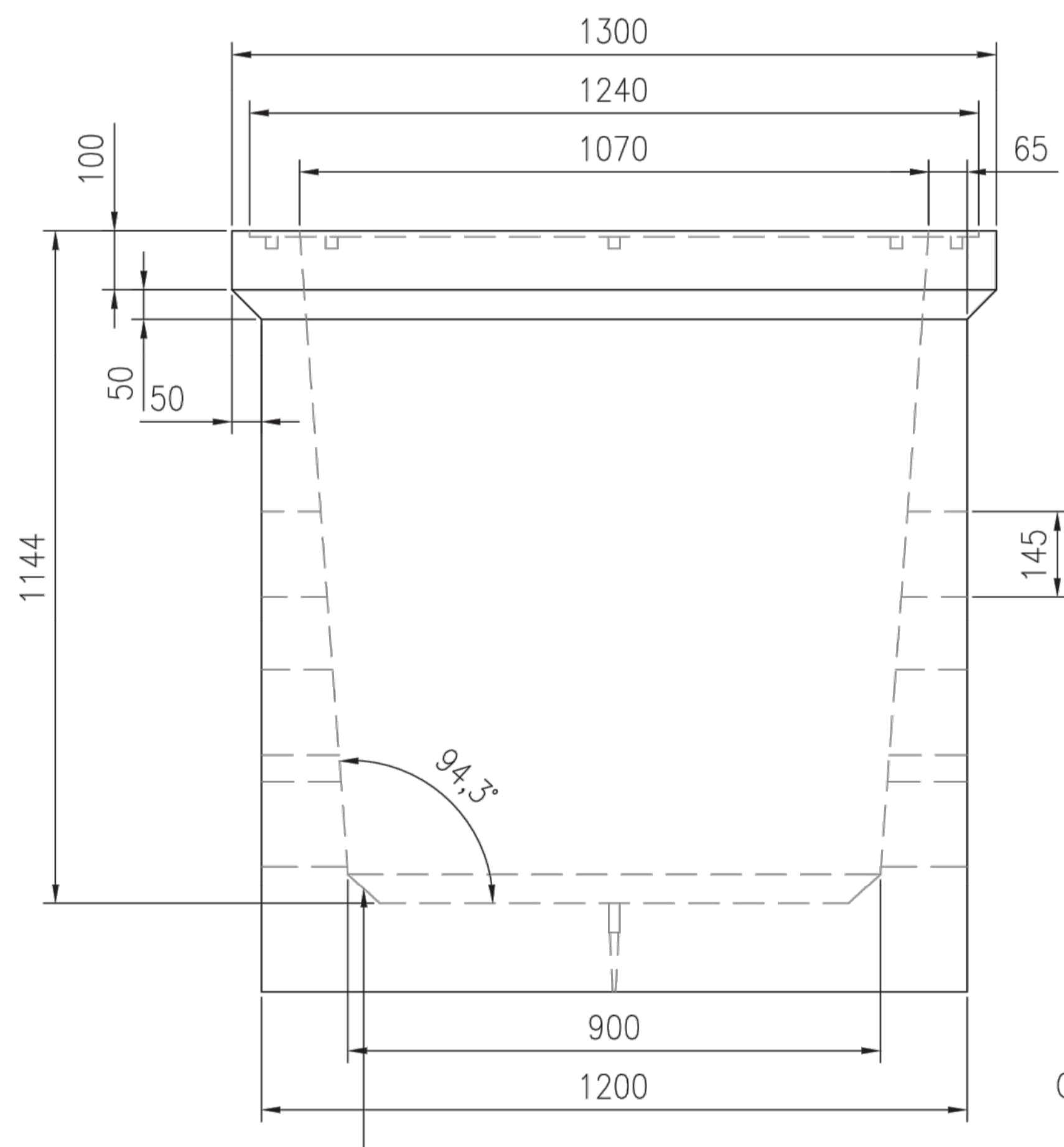
TYPICAL PLAN OF JOINT BAY  
SCALE 1:16

8 NO. HOLES IN THE MOULD  
TO SUIT M20 THREADED INSERT  
(PLEASE CHECK THE ALIGN.  
OF ALL HOLES.)

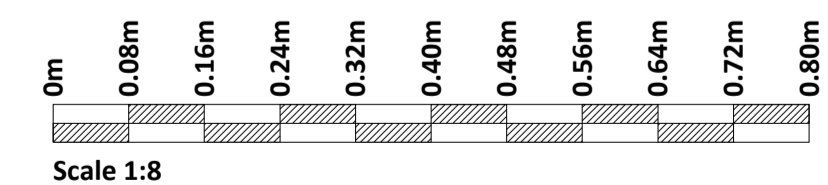
NOTES:

1. ALL DIMENSIONS IN MILLIMETERS.
2. REINSTATEMENT TO COMPLY WITH REQUIREMENTS OF THE RELEVANT LOCAL AUTHORITY/ASSET OWNER.
3. ENTRANCE & EXIT DUCTS TO BE IN LINE.
4. ALL MATERIALS AND WORKMANSHIP TO BE IN ACCORDANCE WITH THE NRA/T.I.I. SPECIFICATION FOR ROADWORKS, MAY 2005 & SUBSEQUENT REVISIONS.
5. REINFORCED CONCRETE TO BE MINIMUM GRADE C32/40, SULPHATE RESISTING CEMENT TO BE USED WHERE AGGRESSIVE SOIL CONDITIONS APPLY, REFER TO TABLE 6.1 OF B.S. 8110.
6. CARRIAGEWAY COVERS AND FRAMES TO BE TO B.S. EN 124.
7. ALL COVERS SHALL HAVE 'ESB' LOGO INCORPORATED IN THEM TO THE APPROVAL OF EIRGRID.
8. STEP IRONS TO BE HOT DIPPED GALVANISED TO B.S. 729 AND POSITIONED AS SHOWN ON ANY CHAMBER DEEPER THAN 700mm ON THE END REMOTE FROM ANY SIDE ENTRY DUCT.
9. CONCRETE PRECAST CHAMBER AND COVER SHOULD BE TESTED THROUGH A 5 POINTS 40 TONNES VERTICAL STATIC LOADING TEST BY AN INDEPENDENT TEST COMPANY. IF REQUIRED, FURTHER DETAILS WILL BE PROVIDED BY EIRGRID.
10. FINAL POSITION OF C2 CHAMBERS SHALL BE AGREED WITH EIRGRID.

RECESS TO BE 1-2mm  
MORE THAT FRAME OF COVER



ISOMETRIC: C2 CHAMBER ARRANGEMENT  
NOT TO SCALE



If Applicable : Ordnance Survey Ireland Licence No. EN 0001220 © Ordnance Survey Ireland and Government of Ireland  
OSI-6186,6140, Cork-40-48-49-59-60



No part of this document may be reproduced or transmitted in any form or stored in any retrieval system of any nature without the written permission of Fehily Timoney & Company as copyright holder except as agreed for use on the project for which the document was originally issued. Do not scale. Use figured dimensions only. If in doubt - Ask!

| Rev. | Description        | App By | Date     |
|------|--------------------|--------|----------|
| A    | ISSUE FOR APPROVAL | JH     | 15.12.21 |
| B    | ISSUE FOR PLANNING | JH     | 27.01.22 |
|      |                    |        |          |
|      |                    |        |          |
|      |                    |        |          |

| PROJECT                    | CLIENT               |          |                |                 |
|----------------------------|----------------------|----------|----------------|-----------------|
| BALLINAGREE WIND FARM      | BALLINAGREE WIND DAC |          |                |                 |
| SHEET                      | Date                 | 15.12.21 | Project number | P2114           |
|                            | Scale (@ A1-)        | 1:8      | Drawing Number | P2114-0300-0009 |
|                            | Drawn by             | NS       | Checked by     | TB              |
|                            | Rev                  | B        |                |                 |
| INTERNAL JOINT BAY DETAILS |                      |          |                |                 |

O:\ACAD\2019\P2114\P2114-0300-0009